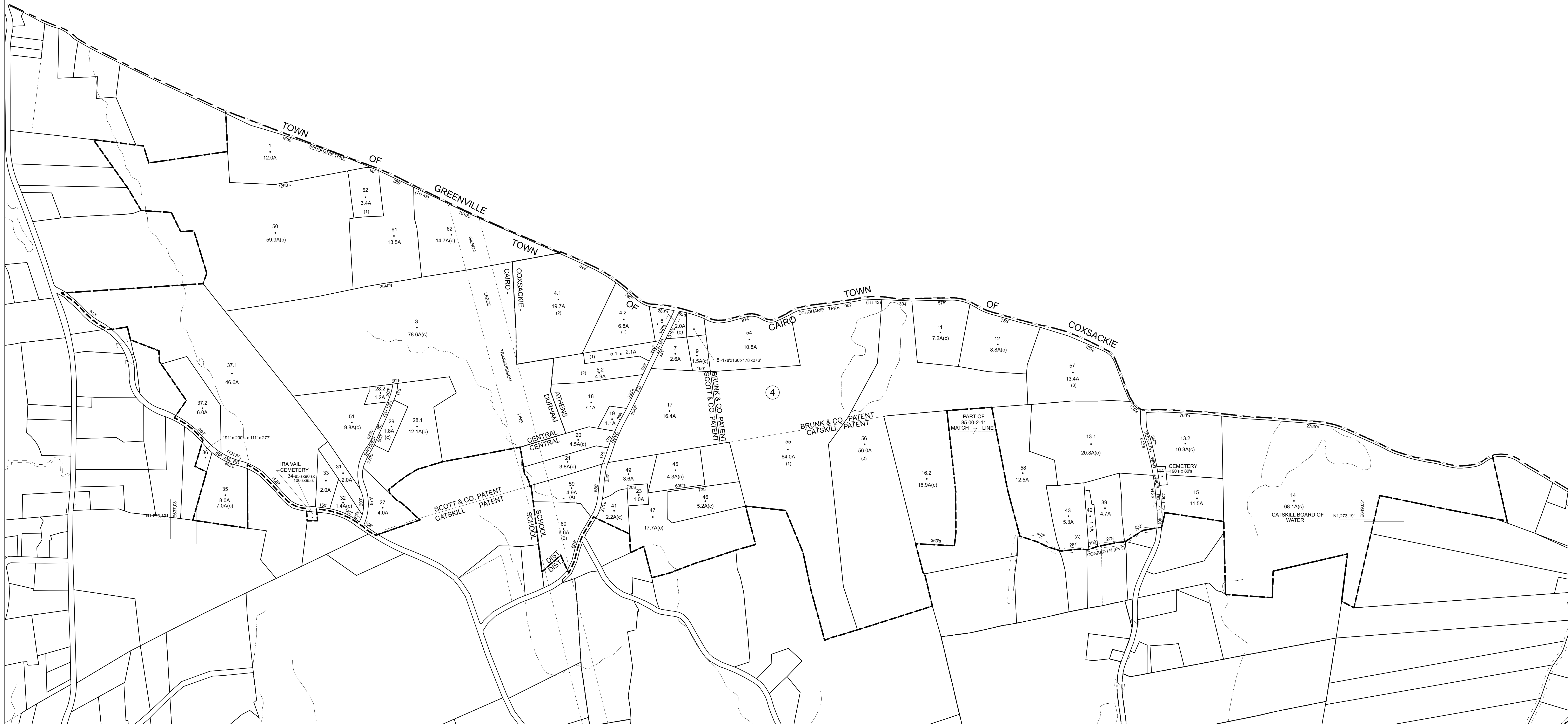


N1,281,191
E664,031

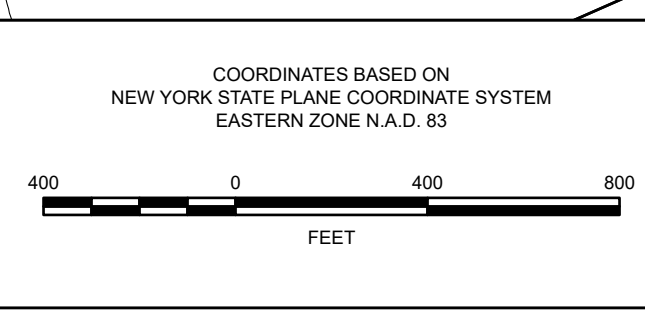
N1,281,191
E664,031



Prepared By
Greene County
 Real Property Tax Service
 411 Main Street
 Catskill, NY 12414
 (518) 719-3525

THIS MAP WAS PREPARED FOR TAX ADMINISTRATION PURPOSES ONLY. NOT INTENDED FOR USE IN CONVEYANCE OF LAND. ABSOLUTELY NO ACCURACY OR COMPLETENESS GUARANTEE IS IMPLIED OR INTENDED. ALL INFORMATION ON THIS MAP IS SUBJECT TO SUCH VARIATIONS AND CORRECTIONS AS MIGHT RESULT FROM A COMPLETE TITLE SEARCH AND/OR ACCURATE FIELD SURVEY.

MAP CONVERTED TO ARC/INFO FORMAT BY ANALYTICAL SURVEYS, INC. NOVEMBER 1998
 DIGITALLY CONVERTED SUMMER 2006
 BY WIELER MAPPING, INC. A DIVISION OF THE JAMES W. SEWELL CO.
 NAD 1983 STATE PLANE, NEW YORK EAST FEET



MAP DATES	
PUBLICATION DATE:	3/1/2006
REVISION DATE:	2/14/2005
CONVERSION TO NAD 1983:	1/22/2006
N.Y.S. CONVERSION APPROVAL:	4/14/2004
CONVERSION TO DIGITAL FORMAT:	1998 & 2003
N.Y.S. APPROVAL:	1/22/1981

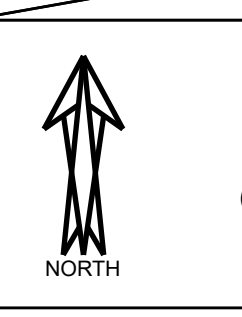
SPECIAL DISTRICTS	
SCHOOL:	155401, 193201
FIRE:	CAIRO
WATER:	
LIGHT:	
HYDRANT:	
SEWER:	

LEGENDS	
PROPERTY LINE	---
BLOCK LIMIT LINE	---
TOWN VILLAGE CITY	---
COUNTY LINE	---
GREAT LOT OR TRACT LINE	---

SCHOOL DISTRICT LINE	---
FIRE DISTRICT LINE	---
WATER DISTRICT LINE	---
SEWER DISTRICT LINE	---
LIGHT DISTRICT LINE	---
RAILROAD	---

GREAT LOT OR TRACT NUMBER	①
TAX MAP BLOCK NUMBER	②
SUBDIVISION LOT NUMBER	(14)
TAX MAP LOT NUMBER	21
SUBDIVISION LOT LINE	---
WATER COURSE	---

CALCULATED ACREAGE	17.5A(c)
DEED ACREAGE	17.5A
SCALED DIMENSION	225%
DEED DIMENSION	173'
COORDINATE LOCATOR POSITION	
DENOTES COMMON OWNER	



TAX MAP
 TOWN OF CAIRO
 GREENE COUNTY
 NEW YORK

68.00