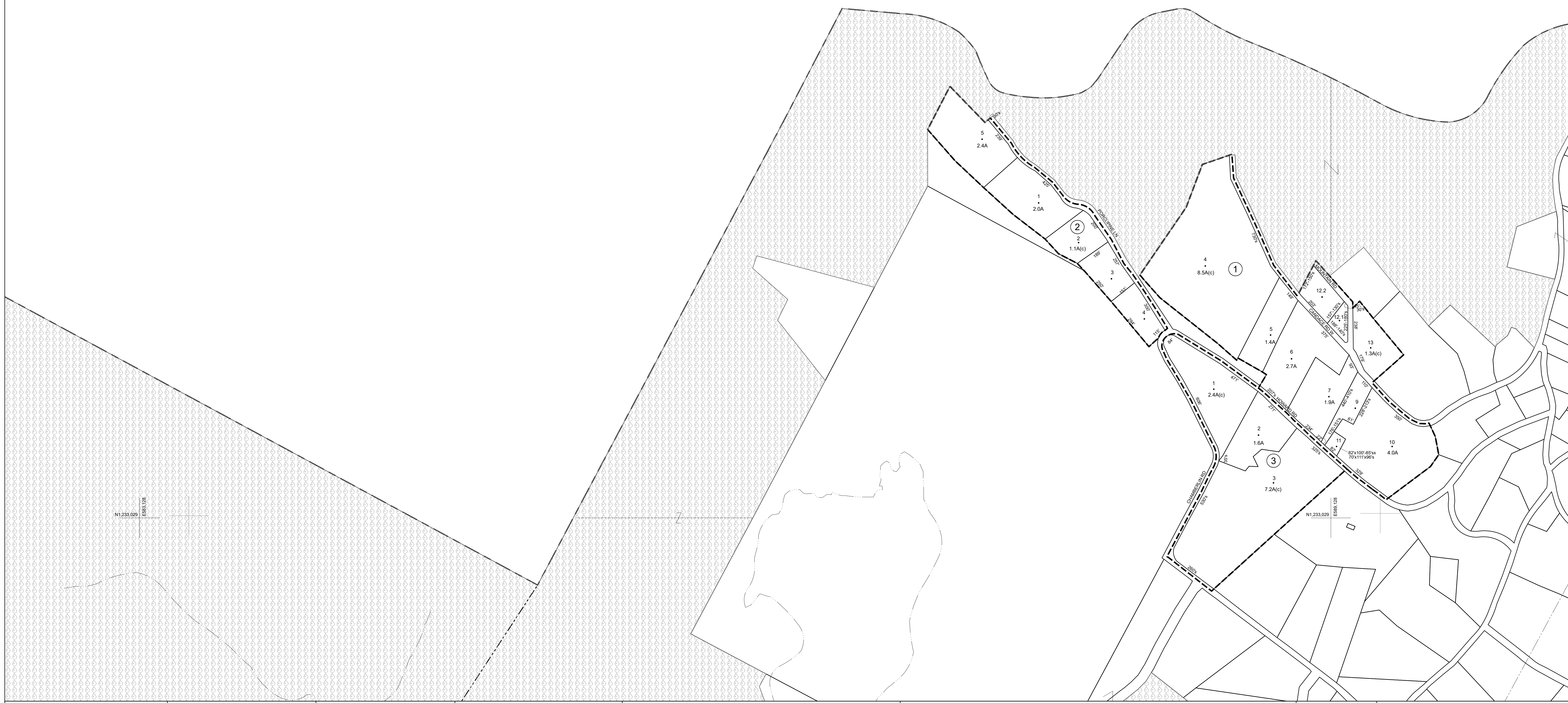


N1,237,029
E598,128

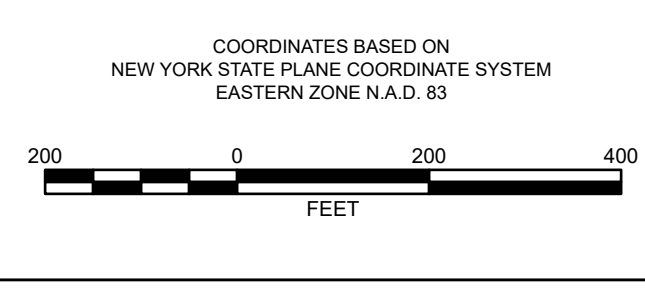
N1,237,029
E598,128



Prepared By
Greene County
Real Property Tax Service
411 Main Street
Catskill, NY 12414
(518) 719-3525

THIS MAP WAS PREPARED FOR TAX ADMINISTRATION PURPOSES ONLY. NOT INTENDED FOR USE IN CONVEYANCE OF LAND. ABSOLUTELY NO ACCURACY OR COMPLETENESS GUARANTEE IS IMPLIED OR INTENDED. ALL INFORMATION ON THIS MAP IS SUBJECT TO SUCH VARIATIONS AND CORRECTIONS AS MIGHT RESULT FROM A COMPLETE TITLE SEARCH AND/OR ACCURATE FIELD SURVEY.

MAP CONVERTED TO AECAD/PTV FORMAT BY ANALYTICAL SURVEYS, INC. NOVEMBER 1998
DIGITALLY CONVERTED SUMMER 2006
BY WEILER MAPPING, INC. A DIVISION OF THE JAMES W. BEWELL CO.
NAD 1983, STATE PLANE, NEW YORK-EAST, FEET



MAP DATES	
PUBLICATION DATE:	3/1/2006
REVISION DATE:	
CONVERSION TO NAD 1983:	1/22/2006
N.Y.S. CONVERSION APPROVAL:	4/14/2004
CONVERSION TO DIGITAL FORMAT:	1998 & 2003
N.Y.S. APPROVAL:	1/22/1981

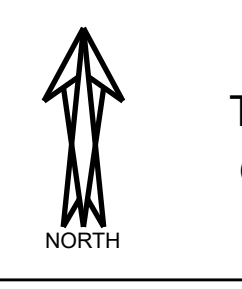
SPECIAL DISTRICTS	
SCHOOL:	159601
FIRE:	HAINES FALLS-TANNERSVILLE
WATER:	
LIGHT:	
HYDRANT:	
SEWER:	
REFORESTATION:	
AMBULANCE:	
GAS:	
AGRICULTURAL:	
MISCELLANEOUS:	

LEGENDS	
PROPERTY LINE	---
BLOCK LIMIT LINE	---
TOWN VILLAGE CITY	---
COUNTY LINE	---
GREAT LOT OR TRACT LINE	---
SCHOOL DISTRICT LINE	---
FIRE DISTRICT LINE	---
WATER DISTRICT LINE	---
SEWER DISTRICT LINE	---
LIGHT DISTRICT LINE	---
RAILROAD	---

LEGENDS	
GREAT LOT OR TRACT NUMBER	①
TAX MAP/BLOCK NUMBER	②
SUBDIVISION LOT NUMBER	(14)
TAX MAP LOT NUMBER	21
SUBDIVISION LOT LINE	---
WATER COURSE	---

CALCULATED ACREAGE	17.5A(c)
DEED ACREAGE	17.5A
SCALED DIMENSION	225%
DEED DIMENSION	173'
COORDINATE LOCATOR POSITION	
DENOTES COMMON OWNER	

149.00	150.03
149.00	165.02
SHEET INDEX	



TAX MAP
TOWN OF HUNTER
GREENE COUNTY
NEW YORK
149.04