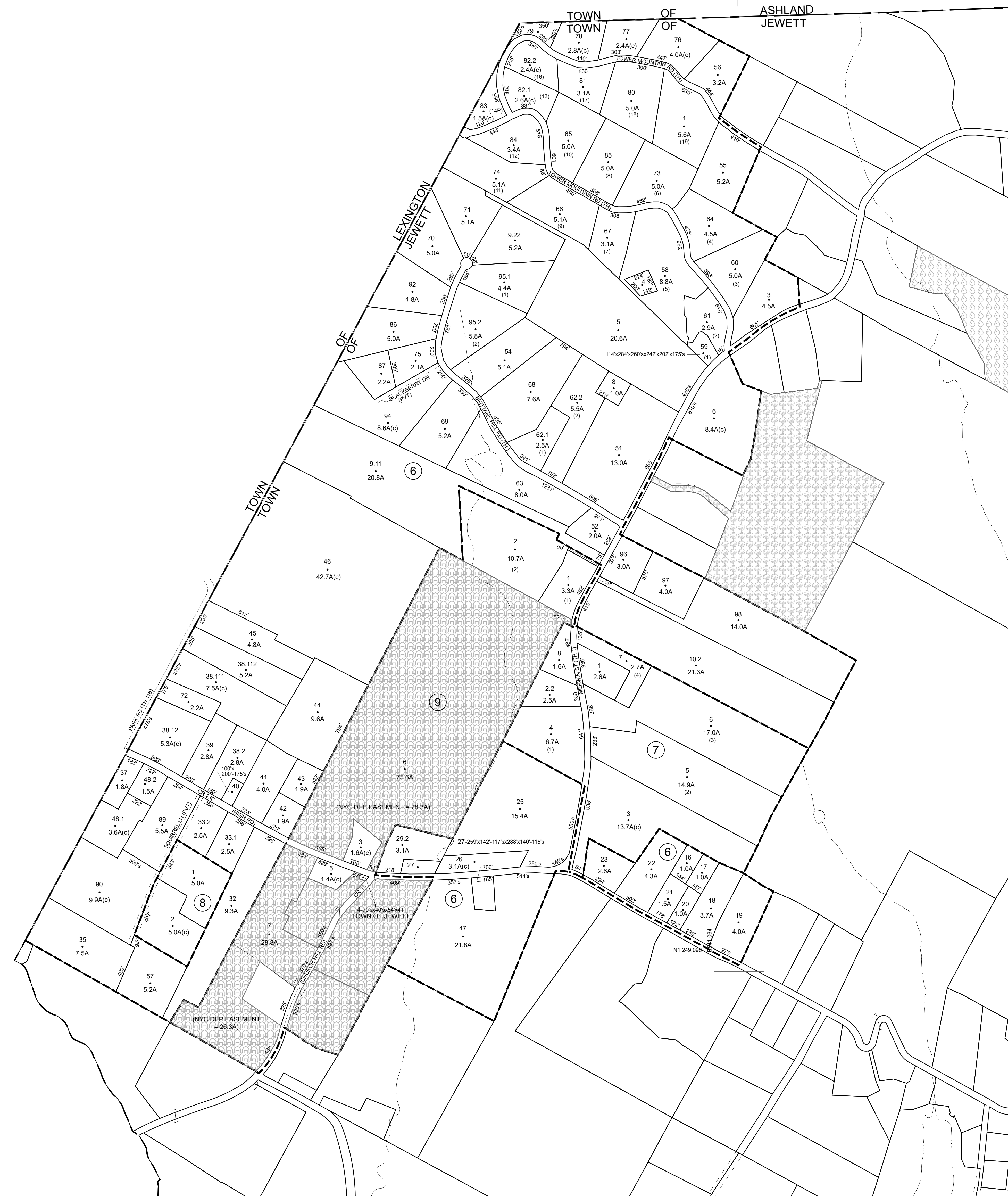


N1,257,098
E539,064

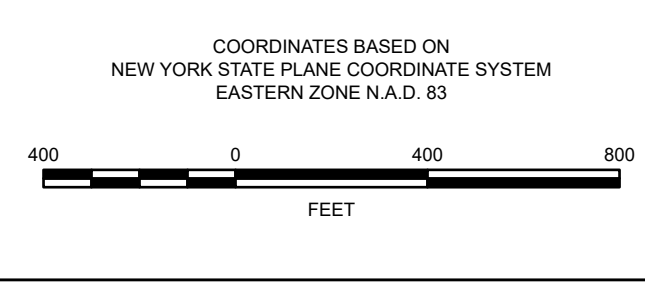
N1,257,098
E541,064

N1,249,098
E539,064



Prepared By
Greene County
Real Property Tax Service
411 Main Street
Catskill, NY 12414
(518) 719-3525

THIS MAP WAS PREPARED FOR TAX ADMINISTRATION PURPOSES ONLY. NOT INTENDED FOR USE IN CONVEYANCE OF LAND. ABSOLUTELY NO ACCURACY OR COMPLETENESS GUARANTEE IS IMPLIED OR INTENDED. ALL INFORMATION ON THIS MAP IS SUBJECT TO SUCH VARIATIONS AND CORRECTIONS AS MIGHT RESULT FROM A COMPLETE TITLE SEARCH AND/OR ACCURATE FIELD SURVEY.
MAP CONVERTED TO ARC/INFO FORMAT BY ANALYTICAL SURVEYS, INC. NOVEMBER 1998
DIGITALLY CONVERTED SUMMER 2006
BY WEILER MAPPING, INC. A DIVISION OF THE JAMES W. SEWELL CO.
NAD 1983 STATE PLANE, NEW YORK EAST FEET



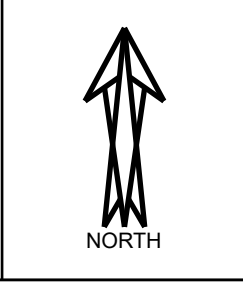
MAP DATES	
PUBLICATION DATE:	3/1/2006
REVISION DATE:	2/15/2004
CONVERSION TO NAD 1983:	1/22/1/2006
N.Y.S. CONVERSION APPROVAL:	4/14/2004
CONVERSION TO DIGITAL FORMAT:	1998 & 2003
N.Y.S. APPROVAL:	1/22/1/1981

SPECIAL DISTRICTS	
SCHOOL:	19461
FIRE:	JEWETT
WATER:	
LIGHT:	
HYDRANT:	
SEWER:	

LEGENDS	
PROPERTY LINE	---
BLOCK LIMIT LINE	---
TOWN VILLAGE CITY COUNTY LINE	---
GREAT LOT OR TRACT LINE	---
SCHOOL DISTRICT LINE	---
FIRE DISTRICT LINE	---
WATER DISTRICT LINE	---
SEWER DISTRICT LINE	---
LIGHT DISTRICT LINE	---
RAILROAD	---
GREAT LOT OR TRACT NUMBER	③
TAX MAP BLOCK NUMBER	②
SUBDIVISION LOT NUMBER	(18)
TAX MAP LOT NUMBER	21
SUBDIVISION LOT LINE	---
WATER COURSE	---

CALCULATED ACREAGE	
17.5A(c)	17.5A
17.5A	22%
17.3	17.3
17.3	17.3
COORDINATE LOCATOR POSITION	
DENOTES COMMON OWNER	

SHEET INDEX	
ASHL	111.00
LEXI	128.00



TAX MAP
TOWN OF JEWETT
GREENE COUNTY
NEW YORK
110.00