



N1,225,029
E896,128

N1,225,029
E896,128

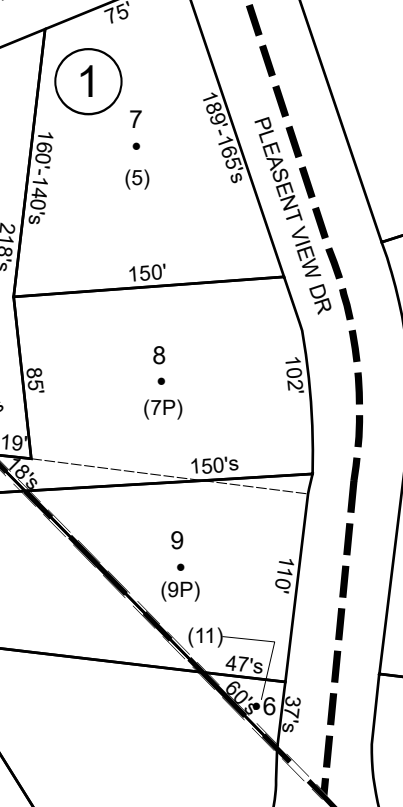
N1,223,029
E897,128

N1,223,029
E896,128

TOWN OF HUNTER

2
1.2A

MAIN ST (BY S. 23A)

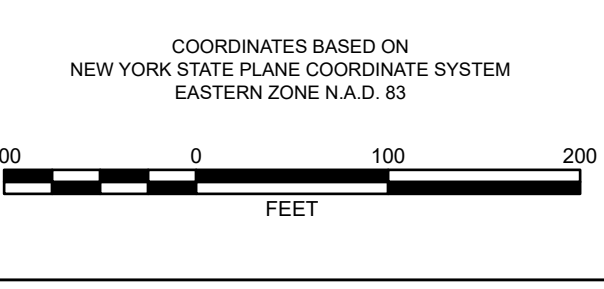


Prepared By
Greene County
Real Property Tax Service
411 Main Street
Catskill, NY 12414
(518) 719-3525

THIS MAP WAS PREPARED FOR TAX ADMINISTRATION PURPOSES ONLY. NOT INTENDED FOR USE IN CONVEYANCE OF LAND. ABSOLUTELY NO ACCURACY OR COMPLETENESS GUARANTEE IS IMPLIED OR INTENDED. ALL INFORMATION ON THIS MAP IS SUBJECT TO SUCH VARIATIONS AND CORRECTIONS AS MAY BE NECESSARY FROM A COMPLETE TITLE SEARCH AND/OR ACCURATE FIELD SURVEY.

MAP CONVERTED TO ANTI-CIPRO FORMAT BY ANALYTICAL SURVEYS, INC. NOVEMBER 1998

DIGITALLY CONVERTED SUMMER 2006 BY WEILER MAPPING, INC. A DIVISION OF THE JAMES W. BEWELL CO. NAD 1983 STATE PLANE, NEW YORK-EAST FEET



MAP DATES	
PUBLICATION DATE:	3/11/2008
REVISION DATE:	3/24/2017
CONVERSION TO NAD 1983:	1/22/1/2006
N.Y.S. CONVERSION APPROVAL:	4/14/2004
CONVERSION TO DIGITAL FORMAT:	1998 to 2003
N.Y.S. APPROVAL:	1/22/1/1981

SPECIAL DISTRICTS	
SCHOOL:	193601
FIRE:	HAINES FALLS-TANNERSVILLE
WATER:	
LIGHT:	
HYDRANT:	
SEWER:	
REFORESTATION:	
AMBULANCE:	
GAS:	
AGRICULTURAL:	
MISCELLANEOUS:	

LEGENDS	
PROPERTY LINE	---
BLOCK LIMIT LINE	---
TOWN/VILLAGE/CITY	---
COUNTY LINE	---
GREAT LOT OR TRACT LINE	---
SCHOOL DISTRICT LINE	---
FIRE DISTRICT LINE	---
WATER DISTRICT LINE	---
SEWER DISTRICT LINE	---
LIGHT DISTRICT LINE	---
RAILROAD	---
GREAT LOT OR TRACT NUMBER	①
TAX MAP BLOCK NUMBER	②
SUBDIVISION LOT NUMBER	(14)
TAX MAP LOT NUMBER	21
SUBDIVISION LOT LINE	---
WATER COURSE	---

CALCULATED ACREAGE	17.5A(3)
DEED ACREAGE	17.5A
SCALED DIMENSION	225'
DEED DIMENSION	173'
COORDINATE LOCATOR POSITION	
DENOTES COMMON OWNER	

HUNT	
HUNT	181.08
HUNT	
HUNT	

SHEET INDEX

TAX MAP
VILLAGE OF TANNERSVILLE
GREENE COUNTY
NEW YORK 181.07